

## Socio-economic Monitoring in Biosphere Reserves in Germany

Protected Areas as Tools for Regional Development - Perspectives for Research and Management

Chartreuse, 13.-15.10.2011

Saint-Pierre-de-Chartreuse, Parc Naturel Régional de la Chartreuse



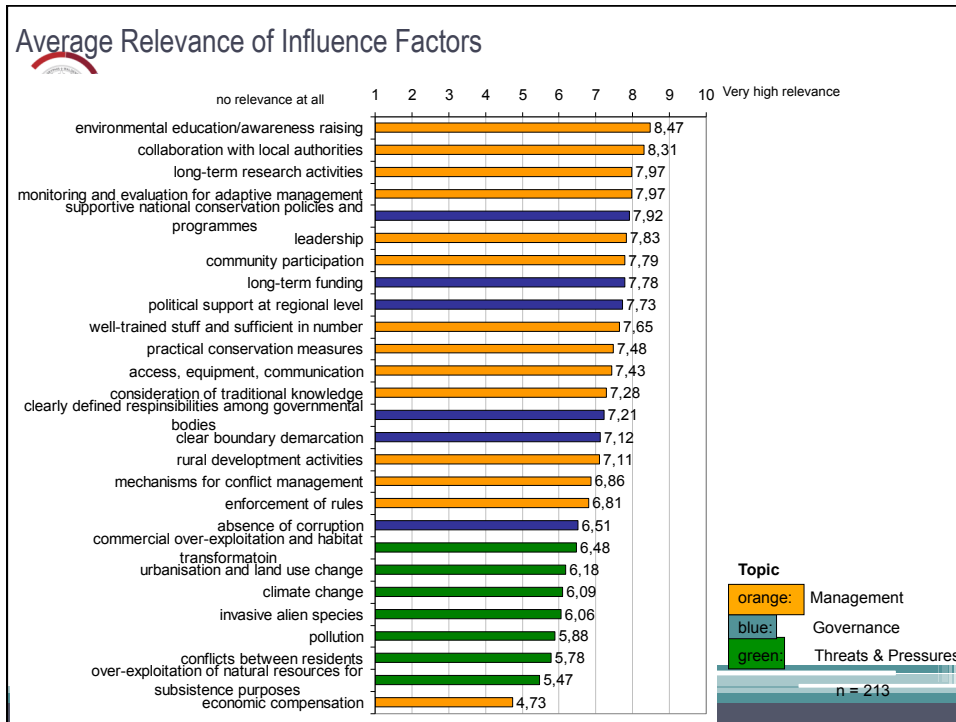
Prof. Dr. Susanne Stoll-Kleemann  
Chair of Sustainability Science and Applied Geography,  
University of Greifswald



### Gobi-Project: Experience and Inspiration

- **Governance of Biodiversity (GoBi) Project** - Assessing Biodiversity Governance and Management Approaches
  - Period: 2004 - 2010, funded by Robert Bosch Foundation (1 Mio €)
  - 12 team members and more than 20 diploma theses
- **Inter- and transdisciplinary approach:** cooperations with essential institutions and acteurs (UNESCO; IUCN, BR Manager etc)
  - 229 BRs surveyed globally
  - 198 expert interviews, about 30 case studies
  - Meta- analysis of about 190 cases described in the literature
- **Selected results:** Capacity building and more information regarding societal aspects is needed
  - Integrated monitoring is required to fulfill the integrated approach of sustainable development in biosphere reserves

Link: <http://www.mnf.unigreifswald.de/institute/geo/english/geoen/geographi@chartreuse, October 2011>  
sustainability-science-and-applied-geography/projects/current-projects/gobi.html



### Research Goals of the Project „Societal Processes in German UNESCO-Biosphere Reserves“

1. Development of a socio-economic monitoring system  
→ Implementation in German biosphere reserves and other protected areas is asked for
2. Identification of influencing factors for nature protection and sustainable use in biosphere reserves, with a focus on:
  - Needs and attitudes of local people
  - Processes of biosphere reserve administrations
  - Type and quality of relations between local people and actors of biosphere reserve administrations

Chartreuse, October 2011



## Case Study Sites



- Four biosphere reserves:
  - Mittelteibe (Saxony-Anhalt)
  - Schorfheide-Chorin (Brandenburg)
  - Schaalsee
  - Southeast-Rügen (both Mecklenburg-Western Pomerania)
  
- Project period: July 2009 - June 2012

Chartreuse, October 2011



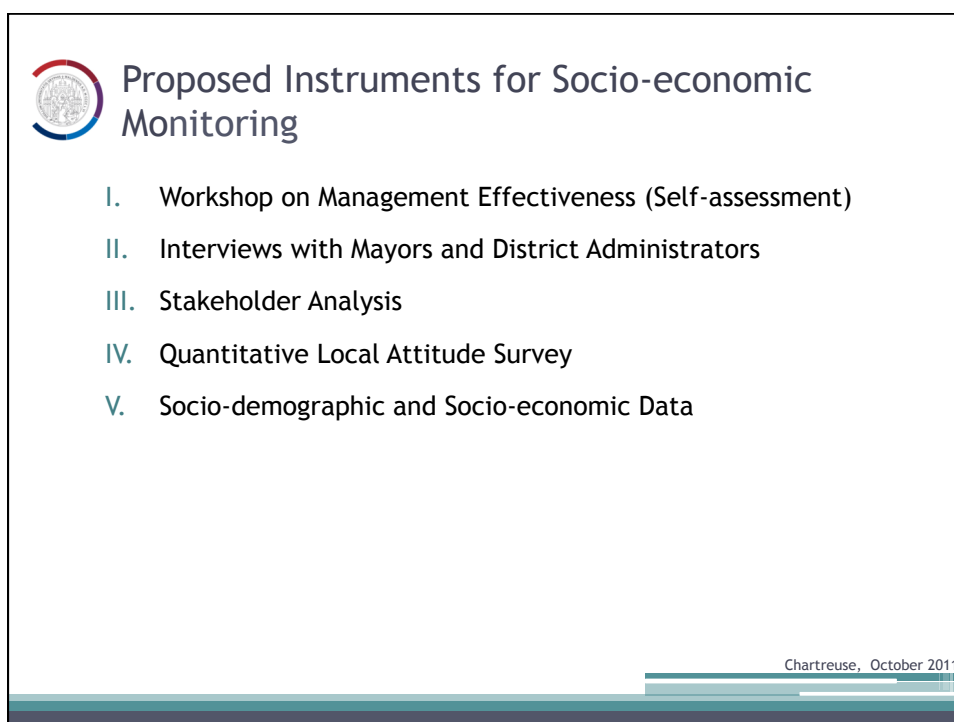
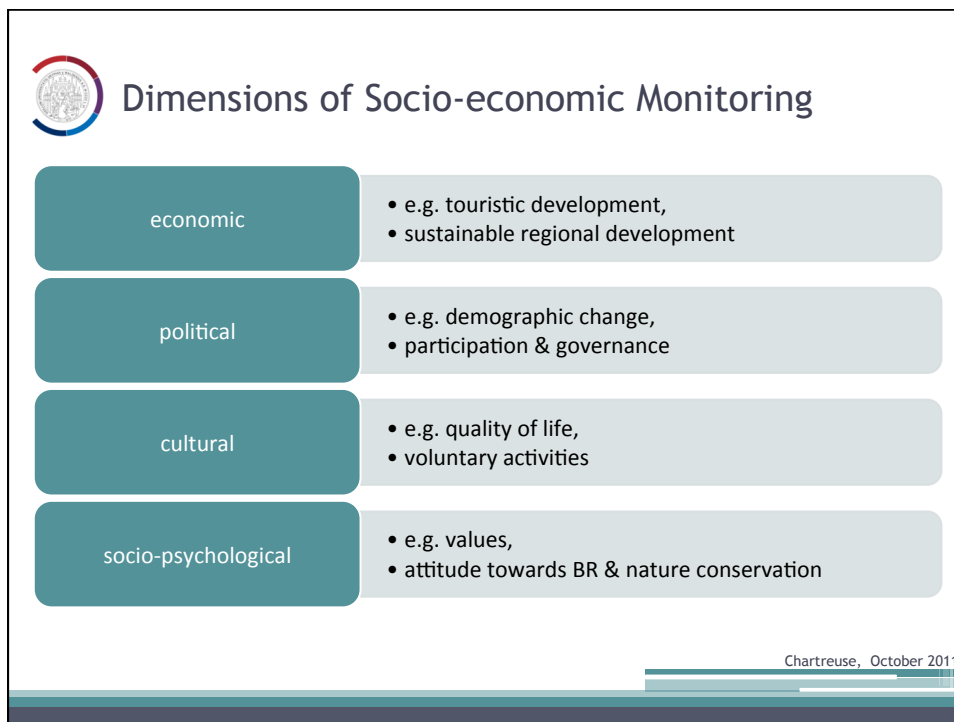
## Project Work

Exchange with staff members of other protected areas and external scientists

Last workshop was held from 11th to 14th of September 2011 on isle of Vilm



Chartreuse, October 2011

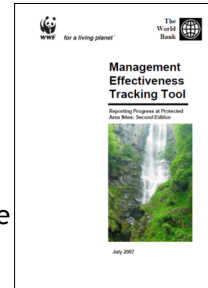




## Workshop on Management Effectiveness (Self-assessment)

### Method:

- Based on international *Tracking Tool*, adapted to biosphere reserves characteristics and German context
- Duration: ca. 5 hours, frequency: every 2-3 years
- If repeated, changes in development become visible



### Content & Aims:

- Assessment of current biosphere reserve situation, evaluation of aims
- Revelation of strengths and weaknesses,

→ Precondition for management improvement

→ Valuable for reporting requirements, as well as self-reflection

Chartreuse, October 2011



## Interviews with Mayors and District Adminstrators

### Method:

- Semi-structured interviews with local authorities
- Scope: all districts and municipalities with more than 10% surface proportion within the biosphere reserve
- Duration: ca. 45 min
- Transcription and qualitative analysis

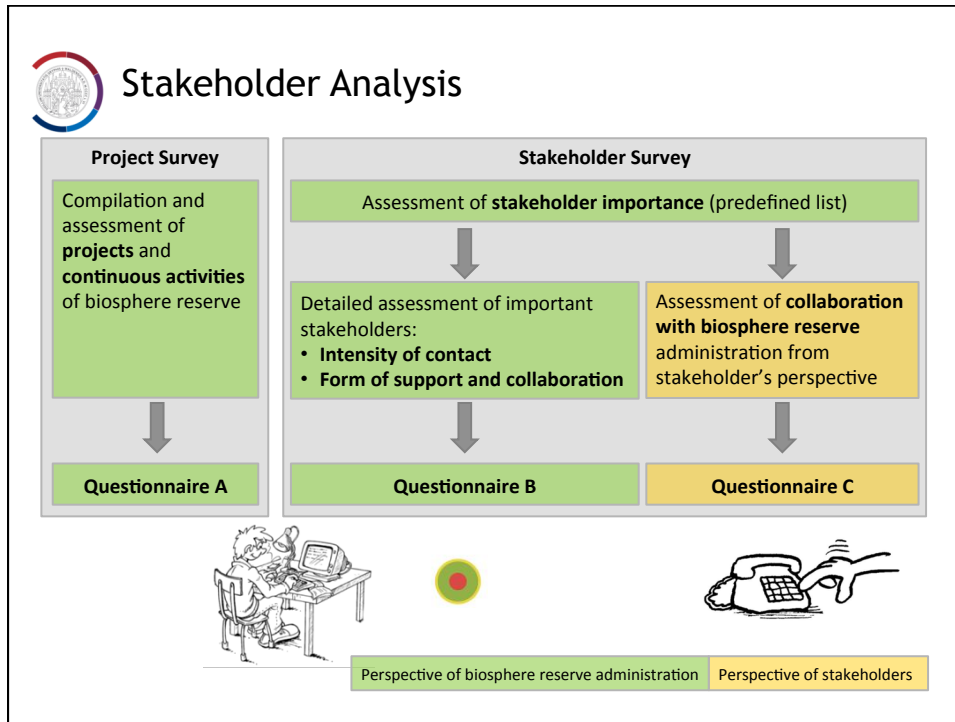


### Content and Aims:

- Local authorities' biosphere reserve 'knowledge' and own expectations
- Local authorities assessing:
  - Collaboration with biosphere reserve administration
  - Biosphere reserve advantages & disadvantages
  - Attitudes of local people towards biosphere reserve

→ Improvement of collaboration with local authorities possible

Chartreuse, October 2011



## Socio-demographic and Socio-economic Data



**Method:** Analyses of available data from statistical federal offices on municipality level

**Use and Aims:** Overview over demographic and economic data for each biosphere reserve

**Challenge:** Consent about uniformed nationwide indicators and area demarcation

Sources:

- Statistische Ämter des Bundes und der Länder: **Statistik Lokal**. Daten für die Gemeinden, kreisfreien Städte und Kreise Deutschlands
- Bundesinstitut für Bau-, Stadt- und Raumforschung: **INKAR** - Indikatoren und Karten zur Raum- und Stadtentwicklung in Deutschland und in Europa

Chartreuse, October 2011



Workshop „Socio-economic Monitoring in German Protected Areas - from Field Test to Establishment“,  
11.-14.09.2011, Isle of Vilm

**Tenor of discussions: proposed socio-economic monitoring system is reasonable**

- establishment in German biosphere reserves welcomed,
- gradual implementation planned in two German Länder,
- integration into periodic review of UNESCO-biosphere reserves is required,
- application in National Parks and Nature Parks is possible

**Further recommendations:**

- Balancing ecological and socio-economic monitoring,
- Development of instruments tackling: economic effects of BR, visitor management, media, volunteers and education for sustainable development

Chartreuse, October 2011



Local Attitude Survey

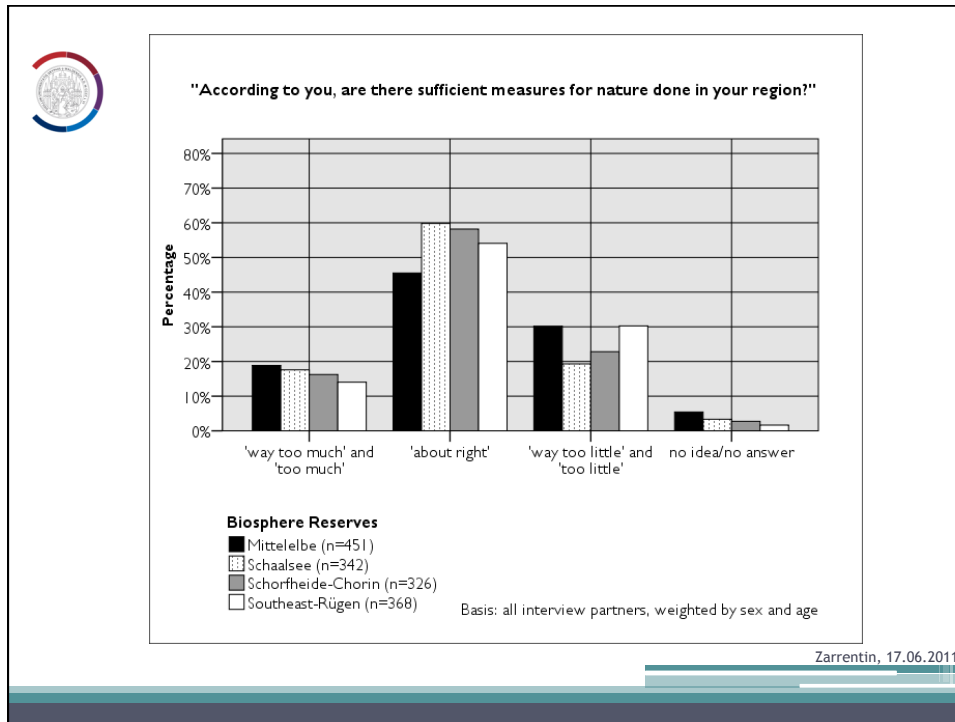
**Details of the Survey**

**Accomplishment:**

- Telephone survey with 1480 interviewees
- Random sampling, last birthday method
- Mostly closed questions (1-5 scale), 9 open questions
- Accomplishment: autumn 2010



Chartreuse, October 2011



**People's Appreciation of their Particular Region**

Thematic range of open replies to: „Spontaneously, what aspect of your particular region do you appreciate most?“	Percentage in the 4 biosphere reserves
Nature and landscape	68 % to 82 %

„nature and pristine forests“  
 „numerous lakes and nature in general“  
 „landscape and tranquility“

Chartreuse, October 2011



## People's Appreciation of their Particular Region

Thematic range of open replies to: „Spontaneously, what aspect of your particular region do you appreciate most?“	Percentage in the 4 biosphere reserves
Nature and landscape	68 % to 82 %
Quality of life	8 % to 24 %

„marvellous cycle tracks“  
 „that you can have a bath [in the lake] and that you can eat such a good icecream here“  
 „sparsely populated“

Chartreuse, October 2011



## Attitude Survey - Content (3)



Perception & assessment of the biosphere reserve

<http://1.1.1.2/bmi/www.schaalsee.de/inhalte/images/biosphaerenreservat.jpg>

Zarrentin, 17.06.2011



## How well known are the biosphere reserves among the local population?

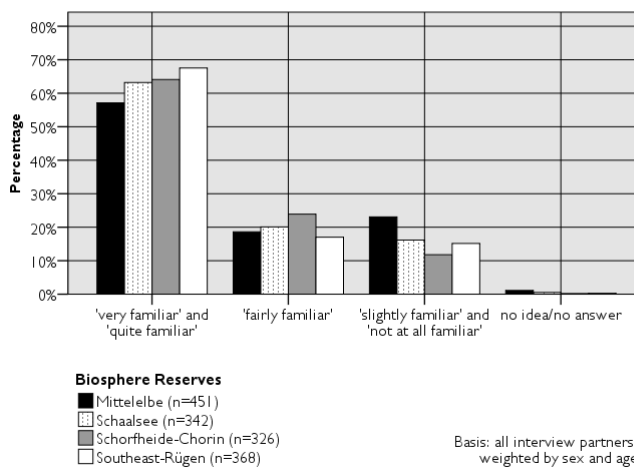


source: [www.schaalsee.de](http://www.schaalsee.de)

Zarrentin, 17.06.2011



### "Are you familiar with the name 'Biosphere Reserve Mittelbe/ Schaalsee/ Schorfheide-Chorin/ Southeast-Rügen'"?



Zarrentin, 17.06.2011



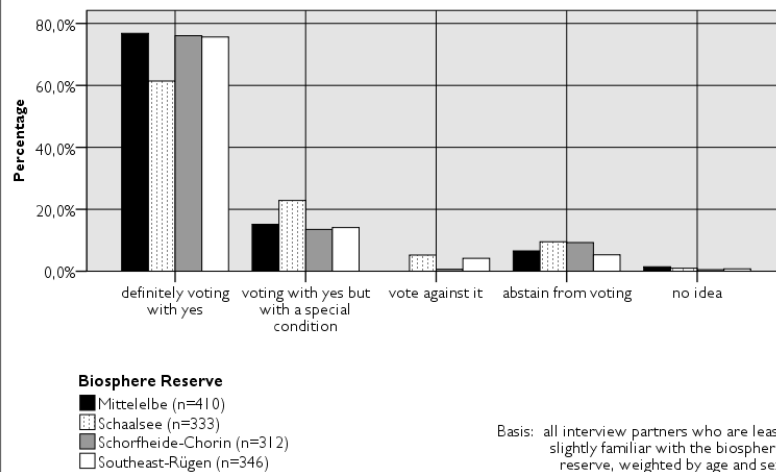
## General opinion about the biosphere reserves



Zarrentin, 17.06.2011



### "If there would be elections for or against the biosphere reserve next sunday, what would be your decision?"



Zarrentin, 17.06.2011



## Willingness to actively participate in the Biosphere Reserves

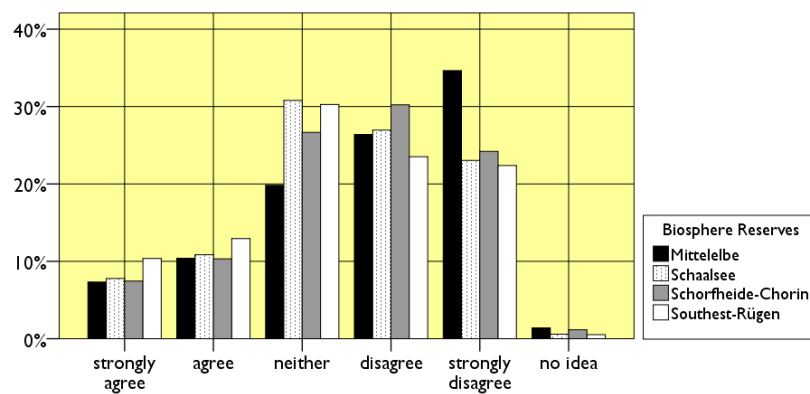


<http://en-mosaik.de/wp-content/uploads/image/KIR/Daumen%20nach%20oben.jpg>

Zarrentin, 17.06.2011



### "If you think about the biosphere reserve, are you interested to actively participate in the biosphere reserve management to defend your own interests?"



Basis: all interview partners who are at least slightly familiar with the biosphere reserves, n=1488, weighted by age and sex

Chartreuse, October 2011



Thank you for your attention!

Zarrentin, 17.06.2011